

8.7 Mouth

To minimize risk to the delicate teeth, the mouth was left for last. Elsewhere, there are examples of Jose using subtle undercutting to give the design a more three dimensional feel. Here, he went beyond light undercutting to carve the inside of the mouth.

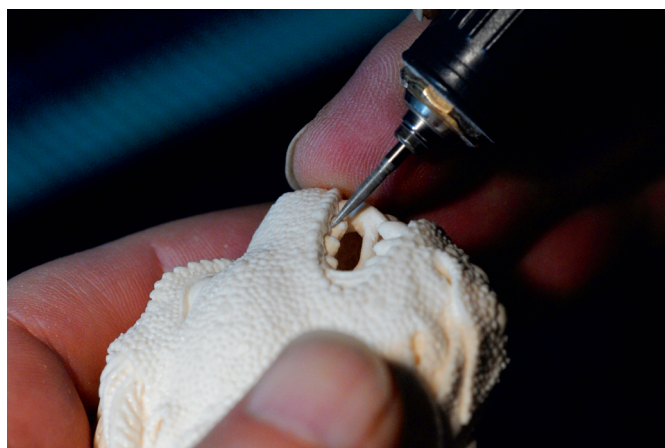


The mouth as a big ball and with roughed out teeth.





Opening space around the tongue.



Refining the teeth.